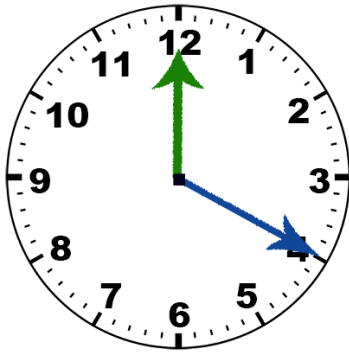




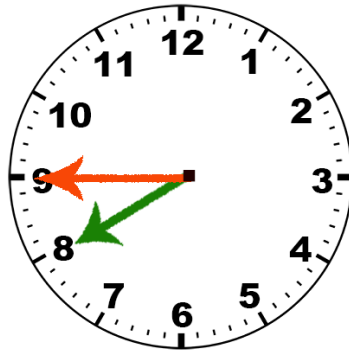
What time is it?

It is.....

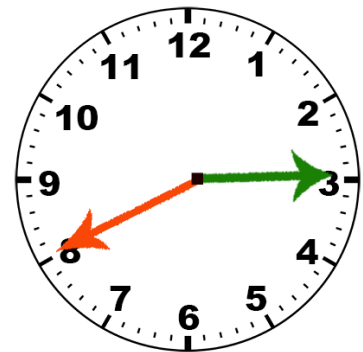
Fill in the missing parts. The green arrow is the hour hand and the blue and red hands count the minutes past and to the hour respectively.



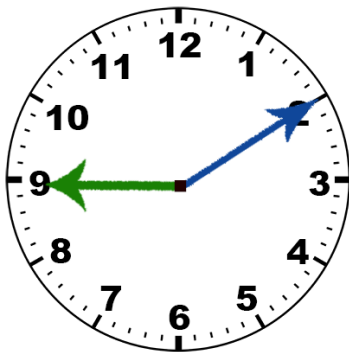
20 ____ 12



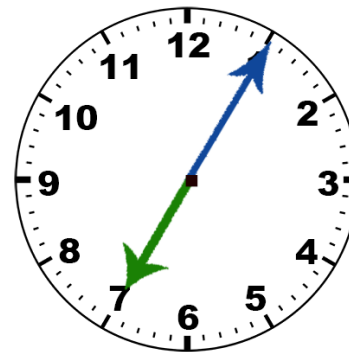
a quarter ____ 8



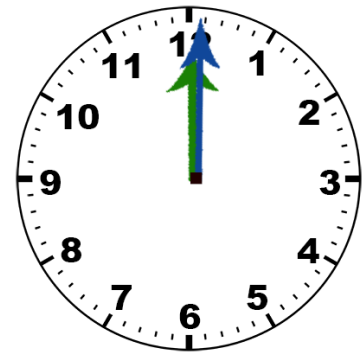
____ 3



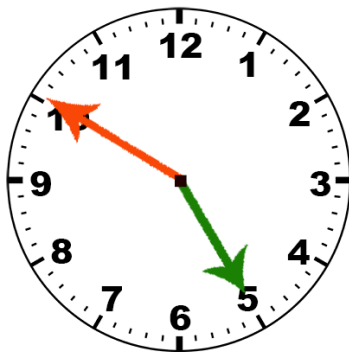
____ past ____



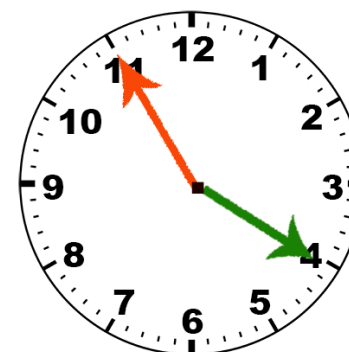
5 ____



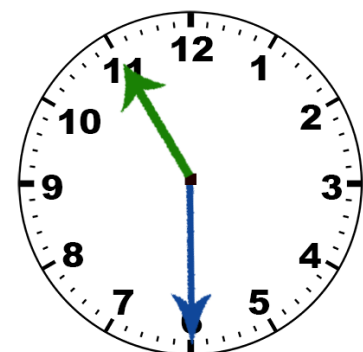
____ o'clock



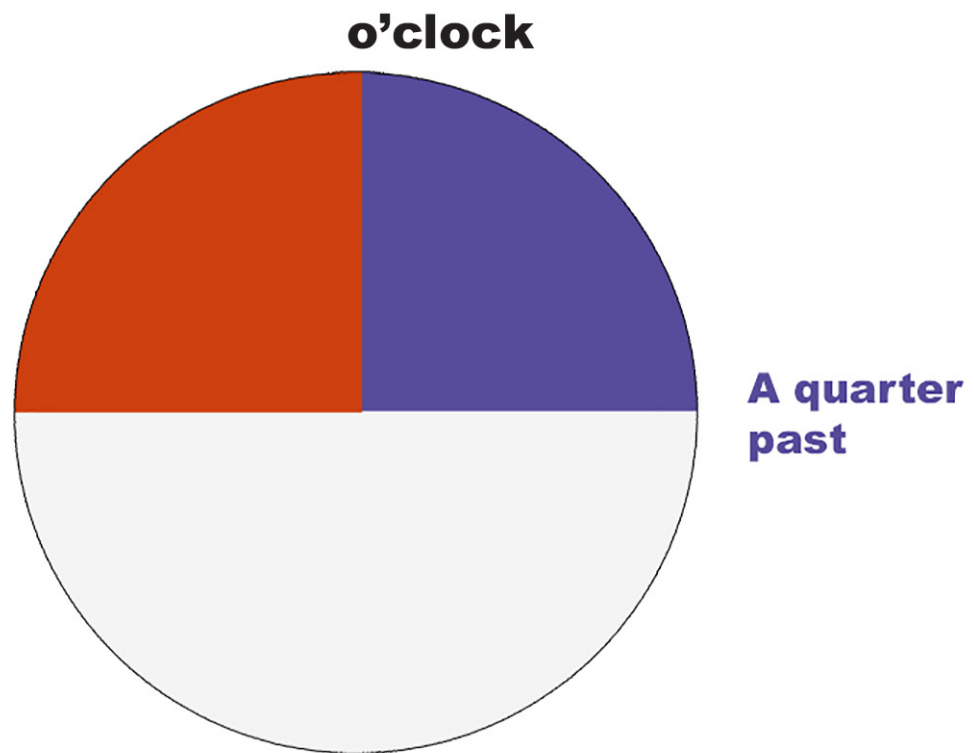
____ to ____



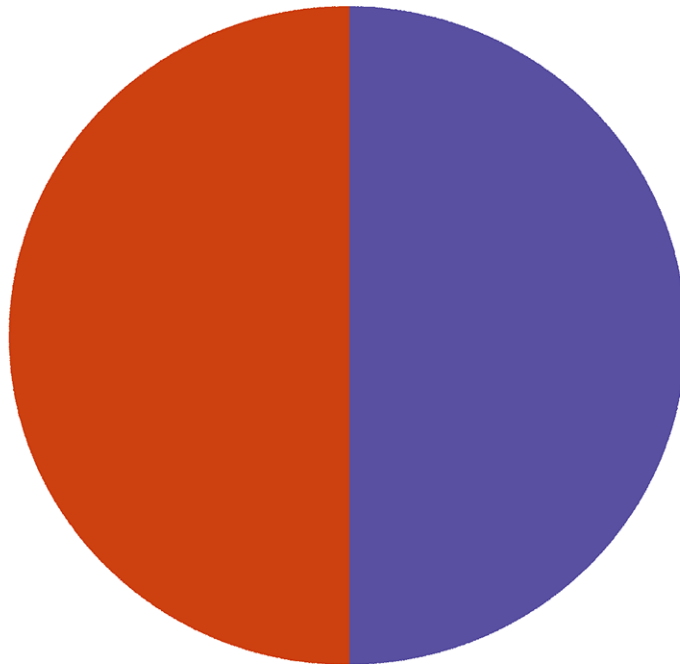
____ 4



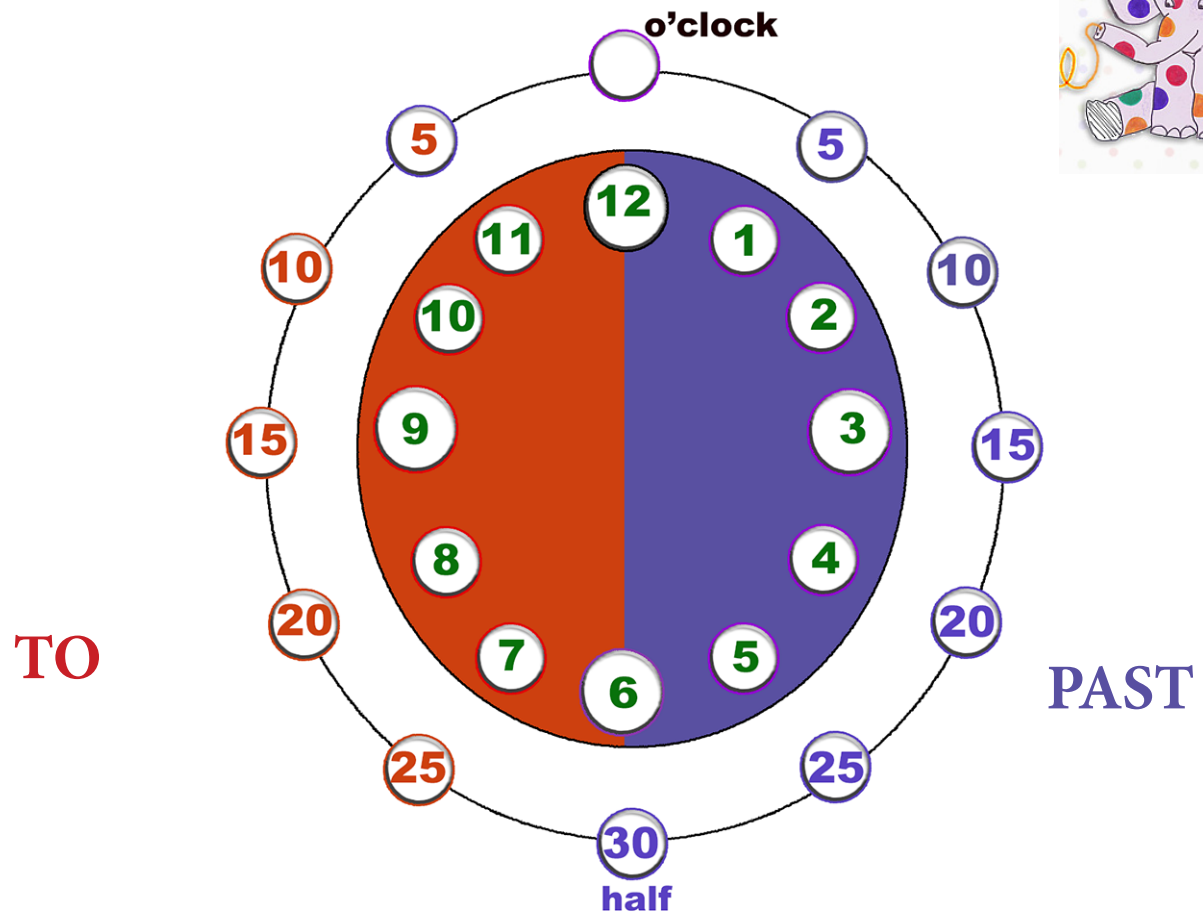
half ____



A quarter of an hour = 15 minutes



Half an hour = 30 minutes



1 hour = 60 minutes

